

Spring Valley

White Suffolk Ram Sale

Wed 23rd November 2011 – commencing 1:00pm

About the White Suffolk Breed

Ease of management - functional shape, mobility, fertility & libido. Can be mated at any time of the year to ewes from any breed, with minimal lambing problems.

Wool & Skins – open faces and clean legs means minimal problems with grass seeds. No colour dockage in the market place & noted for their high quality downs type wools & skins.

White Suffolk sired lambs are ideal for both domestic & export lamb trade requirements.

All these factors add up to easier management of faster growing lamb production flocks, through the use of White Suffolk Rams.



Spring Valley White Suffolks

Rob & Sally Keen – p. 03 6397 3344, m. 0408 932 480, Fax: 03 6397 3381, email: keen.mcl@bigpond.com

Sale commences 1:00pm, rams penned from 11am

84 White Suffolk rams

Sale to be held at “Spring Valley” - 3km west of Bracknell towards Liffey – see back page for map

For further information contact the selling agents:



Anthony Scott: 0418 581 785

Greg Harris: 0409 799 960



Mark Webb: 0458 973 590

Reg Woodiwiss: 0448 961 591

Or your local stock agent (4% rebate to outside agents), or visit our web site: www.whitesuffolk.org.au/springvalley

About Spring Valley White Suffolks....

Our stud ewe base is 500 ewes and we sell around 200 flock rams annually. Our best flock rams are offered for sale in this catalogue. We use our rams in our commercial flock and turn off approx 700 prime lambs annually, which gives us excellent feedback on how our genetics are performing.

The stud is run under commercial conditions except for our show team which are taken out of the main ram group after all Lambplan data has been recorded. Adelaide Royal is the largest showing of White Suffolks in Australia (this year there were over 430 entries). This gives us a very good indication on how our rams are placed within the breed as well as the opportunity to see how our stud sires are breeding throughout Aust. We are constantly infusing top Australian genetics via AI into our stud in an attempt to continue making genetic gains. This year we also did our first ET (Embryo Transplant) program with four of our best ewes. Our show team, sale team and young sires are all selected after post weaning data (5-6 months) has been collected (all the rams are run together until after this point to get the most accurate data possible).

We have been performance recording (Lambplan testing) for 19 years (since its inception) and have individually recorded over 6300 White Suffolk lambs. Our breeding objectives for the stud are to produce sound rams that will perform in many environments and to suit all prime lamb markets. As well as concentrating on structural soundness we also select for fine front for lambing ease, clean points and wool for high skin value.

For the first time we have had an independent skin buyer score all the flock rams to give another selection tool for our clients. Within our flock we are confident you will be able to find the right genetic mix to suit your ewes and we are happy to assist you with this.



Adelaide Royal show 2011. Total of 340 White Suffolk exhibits.

Spring Valley rams (front). Placed 3rd prize in the Lamb Production class (pair of rams. Seen as the most 'commercial relevant class' – points allocated for body length & scrotal size, Lambplan figures, physical attributes and skin value.

The WS rams that were placed above the Spring Valley rams went on to be placed Champion and 3rd in the Interbreed performance class.

SV 93-10 who has been used & retained in flock and **9-10 offered as Lot 2** were our rams in this class.

FLOCK HEALTH

- Ovine Johnes Disease MN1 Status & fully vaccinated flock
- Ovine Brucellosis Accredited Free
- All sheep fully vaccinated with 5 in 1, drenched with Cydectin 8/10/10, backlined off shears.
- Footrot Free



We have been using Australian Sheep Genetics - LAMBPLAN since its inception and now have over 6300 lambs recorded. We find it an important aid for helping to select the right ram. Data for Lambplan is collected and recorded by us in the following ways:

All our lambs are recorded including sire and dam pedigree, twin/single, male/female, date of birth.



- Birth weight is taken of all progeny born, their Lambing ease is noted (that is whether it was an unassisted birth) and their gestation length recorded (this is done by recording the joining date and birth date - *we have done a lot of extra work in this area by hand mating in addition to AI as they are the only ways Lambplan recognises this information.* A sire that influences a ewe to lamb a day or two earlier has a much reduced chance of lambing difficulties.
- Weaning 3-4 months weighing of all lambs born that year.
- Early Post Weaning 5-6months - Scanning for eye muscle depth and fat. Weight is also recorded again at this stage.

Unlike Breedplan in cattle, Lambplan ASBVs and Lambplan's carcass plus index can be directly compared with sheep of different terminal sire breeds (eg Suffolks, Poll Dorsets etc) as well with flocks from all across Australia.

TRAITS THAT DEFINE THE VALUE OF TERMINAL SIRES

The skills in selecting terminal sires for lamb production is to identify those sires that have desirable genes that produce lambs with high growth rate, low fat (lean) and better carcass conformation. At present, we cannot directly measure the genes of an animal. LAMBPLAN can however provide an estimate of the value of a sire's genes by looking at his own performance for certain traits and that of his relatives. This estimate is called an Australian Sheep Breeding Value (**ASBV**). For terminal sires there are three main traits to concentrate on these being:

1. Post weaning weight (**Pwt**) – describe the animal's genetic merit growth rate. A positive ASBV means the animal's progeny will be genetically faster growing. i.e. they reach market weight at an earlier age.
2. Post weaning fat (**Pfat**) – describe the value of each animal's genes for fat depth at constant weight – a negative ASBV means that an animal's progeny will be a genetically leaner animal.
3. Post weaning eye muscle depth (**Pemd**) – describe the value of each animal's genes for eye muscle depth at constant weight – a positive ASBV means a genetically thicker-muscled animal, and one that will have slightly more of its lean tissue in higher-priced cuts.

Why should lamb producers use LAMBPLAN? Sire selection is not 'one size fits all'. Producers who are able to more reliably select the right terminal sire to suit their ewe type production system and market specifications, can more readily turn off lambs at the appropriate weight and fat score in a shorter time period. LAMBPLAN ASBVs enable comparison across flock within a breed and across terminal sire breeds.

Lambing Ease ASBVs are estimates of genetic differences in the ability of a sire's lambs to be born unassisted. LE is reported as a percentage difference in unassisted lambings. Higher, more positive, LE are more favourable. We have been recording this new information for 4 years including 2011 (few studs in Aust have been recording this for this long). Each year the accuracy of these figures increases but we are already able to identify our sires that are tending towards being easier lambers. We are finding LE is not only influenced by Gestation length but also good shaped rams with finer fronts. **SV 192, SV63, SV25, III255, SV18, 146** sons are tending to have positive ASBVs for LE.

Gestation length (GL) ASBVs provide an estimate of the genetic differences between animals in gestation length. It is important that GL ASBVs are used to optimise performance for this trait at *moderately short values* as both *very long and very short gestation lengths will have a negative effect on lamb survival*. GL ASBV is defined as the period from date of conception (ie when the ewe gets in lamb) to birth. Shorter GL is generally associated with lighter birth weights and improved lambing ease. GL ASBVs are expressed in days – moderately low or more negative GL ASBVs are more favourable.

These new ASBVs along with birth weight ASBVs all help reduce lambing difficulties however, please remember that feed is by far the biggest contributor to lambing problems. We pregnancy test our ewes for twins and singles and then feed them accordingly. Also don't forget that the ewe contributes 50% of the genetics.

Latest Sheep CRC Research – Spring Valley had three rams represented in the 1st round of the 50K Snip Chip research – this is for ‘hard to measure traits’ such as eating quality (shear force/tenderness). The early results show that we need to keep some fat which includes intramuscular fat (IMF as in cattle) to maintain eating quality. Feedback sheets from your lamb sales are becoming more and more important – if you are being penalised for fat of 4-5 score then we recommend you should aim for a ram with a negative fat score of around -0.7 or higher negative, to help even out the ewe factor. If you are finding it hard to fatten lambs and getting fat scores of 2 then look for a ram with a just negative up to +0.5 fat asbv. If you are already around the ideal 2-3 fat score for you lambs then rams of -0.7 to +0.0 should be suitable.



Please join us for post sale refreshments
sponsored by National Bank.

Also light lunch prior to the sale.

New info for 2011 – Skin value

When skins are contributing about \$20-\$24 to the lamb income it is worth identifying the best skin types in your sires. Through Mark Webb, we invited Brendan Viney from JBS Australia, Longford plant to score all 200 flock rams prior to cataloguing. This year we have included his skin value score for all rams catalogued.

- 1 score - 58-60+ (very good skins/density) - very suitable to use over all ewe breeds (XBred and merino).
- 2 score – 54-58 (good skins/still style within the fleece)
- 3 score – 48-54 (downsy type of wool – not the style of the 1 & 2 scores) is still suitable over a merino ewe.
- 4 score (Damaged/dermatitis/yolky)
- 5 score (very poor wool)

Many breeders are now retaining their WS x ewe lambs as maternal replacements. The WSx from either a Merino or XBred ewe makes an excellent 1st cross for meat, fertility & milk production. Add the clean points & white skins, and the higher scored rams as indicated above and you are also adding the benefit of wool production for this first x ewe and skin value for its progeny.



White Suffolks as Maternals

High fertility

Strong maternal instincts

Fast growing progeny

High value skins

The WS sire you select contributes 50% of the genetics of the lamb you produce.



In addition to our White Suffolk Stud we also run a commercial prime lamb enterprise and turn off approx 700 lambs annually. These are sired by our White Suffolk rams with the majority being sold at 5-8 months of age and generally weighing 50+kg liveweight. Depending on the season and prices we do have the flexibility with our genetics to move into different markets and sell some lambs as trade or hold onto them and sell some as heavy export. We sell the ewe portion as maternals. These will be available for sale from February onwards. These ewes are sought after not only for the traits mentioned above but also their disease free status.

MEMO OF SIRES



Spring Valley 25-08 Was used as a ram lamb, shown at Adelaide Royal 2009 and sold to Bundra Downs White Suffolk stud, SA. One son, **SV156-09** (pictured) was Supreme Champion Exhibit at Melbourne Royal Show last year and has progeny catalogued.

Another son, **SV 146-09** who was placed 4th in the Aug/Sept pair class at Adelaide Royal last year & sold in our on property sale last year, also has progeny catalogued. Another son was sold to FF MacDonald of Fairburn Stud in Victoria and the feedback has been very positive. 25s progeny when scanned at Adelaide Show against all other White Suffolk rams had some of the best muscle to weight ratios.

SV25 has excellent shape for lambing ease, moderate birth weight combined with good growth and muscle and is leaving these traits in his progeny.

Spring Valley 192-05 Our lowest birth weight sire, and in the top 1% in Aust for Lambing ease. He also has a great doing ability with positive fat and muscle ASBVs his sons generally are suited to smaller framed merino ewes.

Spring Valley 18-08 Another low birth weight sire. His gestation length is shorter than average. Sons of 18 are suited to smaller framed ewes and maidens.

Spring Valley 63-08 A long ram with with positive LE ASBVs (good shape for lambing ease). Generally XBred ewes, including maiden XBreds would suit 63 sons.

Ashmore 263-06 Was used by via AI (artificial insemination). We use AI to access the current top sires throughout Australia. It also gives us good linkages to compare our own sires with these top sires and increases our accuracy levels on Lambplan. He is a very high index ram. His sons will be suited to medium – large framed ewes.

Allendale 1-08 Used via AI. Sire of Lot 1 & 2 in the sale. A correct, clean ram that has breed well for us.

Illoura 255-09 A low birth weight sire with good lambing ease. His sons will be suitable for use over maiden or smaller framed ewes.

Spring Valley 188-08 Although his figures don't yet reflect it, he is a very big growthy ram. He was exhibited at Adelaide Royal Show in 2010, very correct. His sons will generally suit larger framed ewes.

Spring Valley 2-09 Is sired by Anden 276 who has been used extensively throughout Aust, and out of a Detpa Grove ewe we purchased in lamb.

Spring Valley 358-08 A ram we like a lot for his muscle, structure, topline, length. He does leave more head cover than some White Suffolks. We sold a son at stud auction at Adelaide Royal Show this year and have retained semen in him to use next year. See photo of 540 at end of catalogue. Sons will be suited to 1st X prime lamb and XBred ewes.

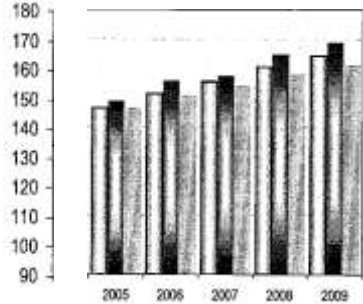
Spring Valley 15-09 Used as a ram lamb-sired by Detpa Grove 252 who have been used in a lot of stud throughout Australia. A balanced figured ram suited to most ewe types.

Sires of the rams catalogued – ASBVs (Australian Sheep Breeding Values)

Tag	Sire	Bwt	Pwt	Pfat	Pemd	Carc+
SV192-05	SV574-03	-0.12	9.25	0.35	2.39	169.83
SV18-08	SV72-06	0.06	9.90	0.83	2.26	170.87
III255-09	III901-07	0.17	13.05	0.09	0.09	166.98
SV25-08	All351-06	0.29	12.16	-0.39	1.13	173.61
SV146-09	SV25-08	0.27	13.39	-0.37	1.55	176.00
SV156-09	SV25-08	0.41	11.08	-0.50	1.07	170.76
SV63-08	L540PD	0.38	12.12	-0.16	0.51	167.60
SV15-09	DG252-06	0.36	12.91	-0.18	0.85	175.52
SV28-09	SV63-08	0.31	11.28	0.10	0.33	159.97
SV2-09	An276-08	0.25	13.02	-0.62	-0.02	167.56
SV188	SV215-06	0.39	9.75	-1.37	-0.66	150.00
SV358-08	SV161-07	0.55	11.91	-0.02	1.86	181.07
Ash263-06	Pen3050	0.43	18.99	-0.41	1.26	209.93
All1-08	TV250-06	0.46	13.56	-0.68	0.40	175.69

Sire photos are on our web site www.whitesuffolk.org.au/springvalley

SHEEP GENETICS – Carcase plus Index averages by year



Left: White Suffolk breed
Middle: **Spring Valley Stud**
Right: Terminal sires in Aust.

LAMBPLANs Carcase Plus Index (Carc+)

For buyers not familiar with the individual ASBVs we also provide a Carcase Plus Index which is calculated on the ASBV traits.

For producers selling lambs at around 5-6 months, it is especially relevant, *giving the best dollar return under today's market requirements.*

High Carcase Plus Index also allows growers to produce lambs that can be carried to higher weights without getting too fat. (Note: the Carcase + index does not take into account birth weight - if you have been having some lambing problems you should also look at the comments we have made on the sires page to assist in your ram selection. Carcase Plus percentages are based on **65% growth, 5% fat and 30% muscle.**

For more information on Lambplan visit their web site: www.lambplan.com.au or go to the link on our web site. We also have other useful prime lamb links and information on our site.

Lots 1 – 12 have been in the show group and have had the extra feeding required to be competitive at Royal Shows. They were put in this group after 7 months of age. The remaining rams catalogued have all run together.

LOT 1 Spring Valley 8-10

Sire: All1-08



Bwt	Pwt	Pfat	Pemd	Carc+	Skin
0.37	12.58	0.06	1.01	173.67	2

A ram we picked out as our 'best' early ram lamb. We used him & are very pleased with his lambs. Great structure, fine front, early growth. We are retaining semen for in flock use (has already been collected).

LOT 2 Spring Valley 9-10

Sire: All1-08



Bwt	Pwt	Pfat	Pemd	Carc+	Skin
0.29	12.95	-0.70	1.13	180.01	1

Shown at Adelaide Royal – he paired up with SV93 to be placed 3rd in the Lamb Production Class. A big upstanding sire.

Tag numbers 1-158 are June drop rams the remainder were born in Aug/Sept 2010.

LOT 3 Spring Valley 85-10 Sire: SV25-08



Bwt	Pwt	Pfat	Pemd	Carc+	Skin
0.28	11.56	-0.18	0.72	165.32	2

Used in the stud as a ram lamb, a son of SV25-08 who was sold to Bundara Downs stud in SA. Shown at Adelaide Royal in the June Pair class.

LOT 4 Spring Valley 24-10 Sire: SV358-08



Bwt	Pwt	Pfat	Pemd	Carc+	Skin
0.54	12.79	-0.41	1.18	179.35	2

We also used this ram – a clean son of SV358. He will grow into a very big ram. We ET'd (embryo transplanted) his dam this year.

LOT 5 Spring Valley 265-10 Sire: SV101-09



Bwt	Pwt	Pfat	Pemd	Carc+	Skin
0.30	11.30	-0.55	0.57	166.09	2

A long ram with even topline. August drop ram.

LOT 6 Spring Valley 239-10 Sire: SV156-08



Bwt	Pwt	Pfat	Pemd	Carc+	Skin
0.34	9.84	-0.89	0.70	162.18	2

A thick, easy doing ram. A son by SV156-09 who was Melbourne Champion 2010.

LOT 7 Spring Valley 512-10

Sire: SV156-08



Bwt	Pwt	Pfat	Pemd	Carc+	Skin
0.23	10.33	-0.67	1.10	168.20	1

Another son by SV156-09 with good muscle and shape for lambing ease.

LOT 8 Spring Valley 533-10

Sire: SV61-09



Bwt	Pwt	Pfat	Pemd	Carc+	Skin
0.34	9.84	-0.89	0.70	162.18	2

A thick, clean, early maturing ram with a good combination of figures. Will end up being a moderate framed ram.

LOT 9 Spring Valley 232-10

Sire: Ill255-09



Bwt	Pwt	Pfat	Pemd	Carc+	Skin
0.16	11.31	-0.20	0.36	161.38	2

A low birth ram - sired by Illoura 255-09 who was used in many studs throughout Aust in 2010.

LOT 10 Spring Valley 514-10

Sire: SV18-08



Bwt	Pwt	Pfat	Pemd	Carc+	Skin
0.37	11.76	-0.32	0.45	165.90	2

A son of SV18-08 who is one of our low birth weight sires.

LOT11 Spring Valley 17-10

Sire: Ash263-06



Bwt	Pwt	Pfat	Pemd	Carc+	Skin
0.41	15.29	-1.13	-0.13	178.36	1

Twin to lot 12. A very clean, stylish ram. In top 1% of all Terminal lambs born in 2010 for early growth.

LOT 12 Spring Valley 16-10

Sire: Ash263-06

Sorry, haven't got photo of him but he looks a lot like Lot 11.

Bwt	Pwt	Pfat	Pemd	Carc+	Skin
0.39	15.43	-0.94	0.16	181.58	1

Twin to lot 11. Sired by Ashmore 263 who has been used extensively via AI throughout Australia - a very high figured sire.

Lot	Tag	Sire	Bwt	Pwt	Pfat	Pemd	Carc+	Skin	Purchaser	Price
13	387	SV156	0.39	12.53	-0.20	0.81	173.27	2		
14	260	Ash263	0.44	14.44	-0.16	0.95	183.91	2		
15	522	SV15	0.31	12.68	-0.25	0.66	172.17	3		
16	566	SV358	0.50	11.14	-0.43	1.37	174.57	1		
17	277	SV308	0.39	13.09	-1.23	-0.02	170.46	1		
18	201	SV18	0.29	11.99	0.30	1.40	174.48	1		
19	460	SV358	0.50	11.79	-0.31	0.81	169.21	3		
20	218	SV63	0.40	12.00	-0.43	0.26	165.10	1		
21	408	SV358	0.39	11.39	-0.42	0.89	168.48	3		
22	188	SV188	0.50	10.47	-1.01	-0.65	150.29	2		
23	552	SV15	0.50	12.43	-1.02	-0.64	159.38	1		
24	489	SV188	0.43	11.49	-0.95	-0.43	155.95	1		

8 Lower birth weight rams

Lot	Tag	Sire	Bwt	Pwt	Pfat	Pemd	Carc+	Skin	Purchaser	Price
25	424	SV18	0.27	10.50	-0.57	0.47	160.53	2		
26	279	SV147	0.23	10.84	-0.25	0.69	163.32	2		
27	300	SV18	0.05	8.51	-0.03	2.11	166.72	2		
28	257	Ash263	0.31	15.39	0.16	1.14	188.19	4		
29	234	SV192	0.23	9.40	-0.49	1.45	164.20	2		
30	619	SV63	0.37	9.91	-0.26	0.72	159.19	2		
31	488	SV18	0.01	9.40	0.35	1.38	160.21	1		
32	206	III255	0.18	10.39	-1.10	-0.50	151.99	1		

Lots 33 -44 Moderate birth weight rams with good growth

Lot	Tag	Sire	Bwt	Pwt	Pfat	Pemd	Carc+	Skin	Purchaser	Price
33	208	SV147	0.28	10.89	-0.78	0.00	158.33	1		
34	463	SV156	0.33	10.91	-0.95	0.04	159.14	1		
35	314	SV18	0.35	11.52	-0.24	-0.04	158.72	1		
36	461	SV15	0.34	10.96	-0.95	-0.13	158.34	2		
37	280	SV188	0.35	9.51	-0.88	0.19	153.80	3		
38	347	SV63	0.33	11.74	0.20	0.28	161.22	2		
39	591	SV358	0.30	10.14	-0.31	1.35	167.91	3		
40	368	SV358	0.36	10.72	-0.08	1.24	167.67	2		
41	304	SV25	0.25	10.41	-0.38	0.31	156.05	1		
42	198	SV18	0.25	10.16	-0.44	0.48	157.90	1		
43	440	SV147	0.37	12.16	-0.58	0.07	165.14	3		
44	335	SV188	0.35	10.68	-1.20	0.08	158.80	2		

16 Lower birth weight rams

Lot	Tag	Sire	Bwt	Pwt	Pfat	Pemd	Carc+	Skin	Purchaser	Price
45	613	SV117	0.19	9.53	0.11	0.52	153.32	1		
46	221	III255	0.15	10.78	-0.21	0.76	163.92	4		
47	345	SV2	0.22	10.83	-0.39	0.09	156.98	4		
48	502	SV147	0.27	10.08	-0.50	0.35	156.69	1		
49	474	SV18	0.18	9.43	0.09	1.33	162.22	1		
50	224	SV192	0.06	8.55	0.02	1.68	159.72	1		
51	431	SV192	-0.03	8.74	0.21	2.31	168.65	3		
52	396	SV149	0.16	10.30	-0.13	1.06	163.96	2		
53	400	SV63	0.21	10.41	0.05	1.53	168.96	2		
54	510	SV192	0.09	11.22	0.17	1.08	165.03	3		

Lot	Tag	Sire	Bwt	Pwt	Pfat	Pemd	Carc+	Skin	Purchaser	Price
55	228	III255	0.22	11.72	0.14	0.79	168.39	2		
56	602	SV358	0.28	9.66	0.05	1.55	165.79	2		
57	164	SV156	0.25	11.17	-0.73	0.75	167.91	4		
58	223	III255	0.15	10.72	-0.04	0.54	160.35	3		
59	225	SV192	0.13	8.55	-0.30	1.25	156.21	1		
60	250	III255	0.33	12.39	-0.63	-0.33	161.68	2		



8 Good Younger Rams

Lot	Tag	Sire	Bwt	Pwt	Pfat	Pemd	Carc+	Skin	Purchaser	Price
61	606	SV63	0.38	11.74	-0.74	0.25	166.05	3		
62	607	SV63	0.38	12.21	-0.55	0.75	172.24	3		
63	494	SV146	0.15	11.03	-0.14	1.63	173.19	2		
64	446	SV147	0.29	10.70	-0.37	0.30	159.87	2		
65	600	SV358	0.42	10.76	-0.31	1.34	170.08	1		
66	450	SV358	0.39	9.71	-0.44	1.43	165.99	2		
67	605	SV63	0.40	11.60	-0.78	0.08	163.33	3		
68	601	SV358	0.45	9.15	-0.61	0.91	161.07	1		

Lot	Tag	Sire	Bwt	Pwt	Pfat	Pemd	Carc+	Skin	Purchaser	Price	
69	199	SV18	0.16	9.37	0.00	0.96	157.53	3			
70	410	SV147	0.26	11.88	-0.56	0.36	165.75	3			
71	220	SV146	0.30	11.03	-0.69	0.85	167.89	1			
72	381	SV312	0.35	11.02	-0.74	0.73	168.46	3			
73	407	SV358	0.41	10.93	-0.21	0.86	164.27	3			
74	310	SV316	0.27	12.17	-1.47	0.95	177.02	3			
75	211	SV2	0.38	12.18	-0.41	0.23	166.07	2			
76	423	SV188	0.32	9.90	-0.65	0.32	156.87	1			
77	341	SV28	0.35	11.11	-0.35	0.36	160.79	2			
78	174	SV192	Sorry no figures available						2		

Lot	Tag	Sire	Bwt	Pwt	Pfat	Pemd	Carc+	Skin	Purchaser	Price
79	501	SV146	0.32	9.56	-0.56	1.22	164.56	2		
80	444	SV146	0.35	10.51	-0.97	0.57	164.62	1		
81	361	SV2	0.31	11.17	-0.77	0.40	164.75	2		
82	256	Ash263	0.28	14.65	0.12	1.18	185.09	3		
83	403	SV15	0.40	12.49	-0.88	0.29	170.36	2		
84	242	SV25	0.31	10.61	-0.30	0.38	157.13	2		

Notes:



443 exhibited at Adelaide Royal Show 2011 and sold to mainland stud. His twin is **Lot 80** and suited to breeding replacement ewe lambs.

Some of the team at Adelaide Royal Show. Left to right: SV93 retained in stud. SV540 sired by SV358. SV443 twin to Lot 80. Both sold to mainland studs.



